

TO LET

**The Village,
Charlton, London
SE7**

Two-Bedroom Basement Flat -
Unfurnished
£1,650pcm





Description

Two-bedroom split level self-contained apartment. Situated at the edge of Charlton Village and within half a mile of Charlton mainline station.

Steps up to communal front door.

The accommodation comprises: -

Bedroom (1)

18'8" x 13'10" (5.69m x 4.22m) Newly fitted carpet. Radiator.

Bedroom (2)

12'4" x 12'9" (3.76m x 3.88m) Newly fitted carpet. Radiator.

Kitchen

12'4" x 12'9" (3.75m x 3.88m) Range of wall and base units with work surface. Inset electric oven with gas hob and extractor hood. Washing machine. Fridge freezer. Vinyl flooring.

Living Room

12'11" x 15'9" (3.95m x 4.81m) Newly fitted carpet. Radiator.

Bathroom

8'4" x 7'7" (2.54m x 2.30m) White bathroom suite comprising bath with shower over. Pedestal basin and low-level WC. Vinyl flooring.

Own Garden

RENT: £1,650 PER CALENDAR MONTH EXCLUSIVE (i.e. approx. £380 per week)

Viewing

Strictly via sole agents Hindwoods.

Donna Distin

d.distin@Hindwoods.co.uk

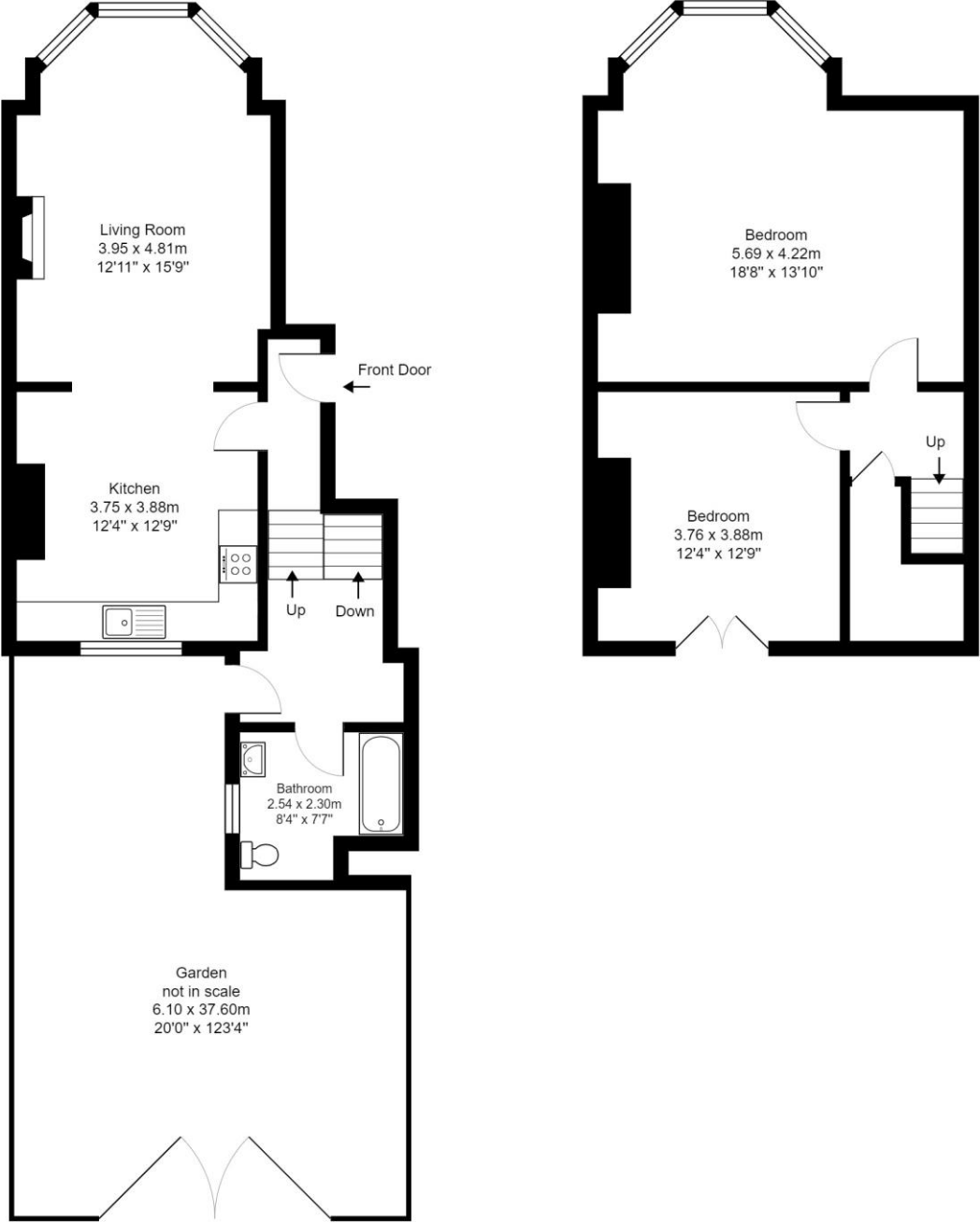



HINDWOODS
 hindwoods.co.uk
020 8858 9303

21/01/2021 Energy performance certificate (EPC) - Find an energy certificate - GOV.UK

Score	Energy rating	Current	Potential
92+	A		
81-91	B		
69-80	C	75 c	79 c
55-68	D		
39-54	E		
21-38	F		
1-20	G		

48 The Village,



Gross Internal Area: 86.4 m² ... 930 ft² (excluding garden not in scale)
All measurements are approximate and for display purposes only.