

TO LET

**Reventlow Road,
Eltham, London, SE9**

2 Bedroom House - Unfurnished
£1,850 PCM





Description

Hindwoods are delighted to welcome to the market, this fully refurbished two-bedroom house. Situated in new Eltham, the property is a short walk from all local amenities, and new Eltham station.

The accommodation comprises:

Ground Floor

Living Room

9'8" x 11'8" (2.95 x 3.57m)

Double glazed windows, freshly painted walls, new flooring, radiator.

Kitchen/Diner

14'11" x 11'5" (4.55 x 3.47m)

Range of wall and base units with worktop surfaces. Stainless steel sink with chrome effect mixer tap over.

Built in oven, hob and extractor. Tiled splashback.

Fridge/freezer. Sash window, freshly painted and new flooring. single glazed window. sliding doors leading into the garden.



First Floor

Bedroom 1

2 double glazed windows, built in wardrobes, newly laid carpet, freshly painted walls, radiator.

Bedroom 2

Double glazed window, cupboards, newly laid carpet, freshly painted walls, radiator.

Bathroom

White suite comprising of a panelled bath with mixer tap and shower attachment. Separate walk-in shower.

Pedestal wash hand basin, low level W/C, and part tiled walls. Radiator. double glazed window.



Viewings

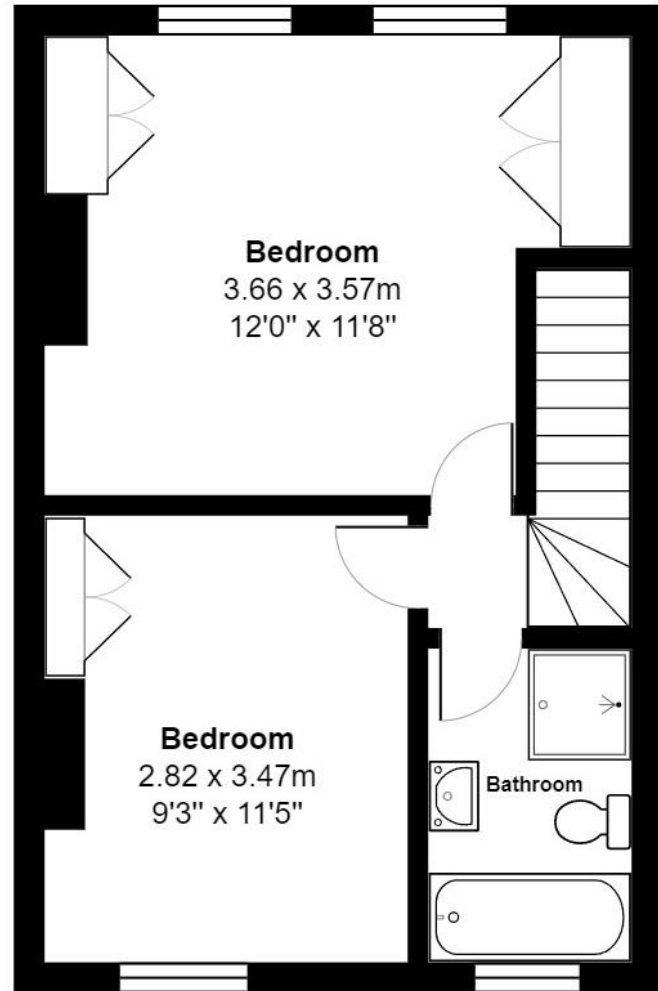
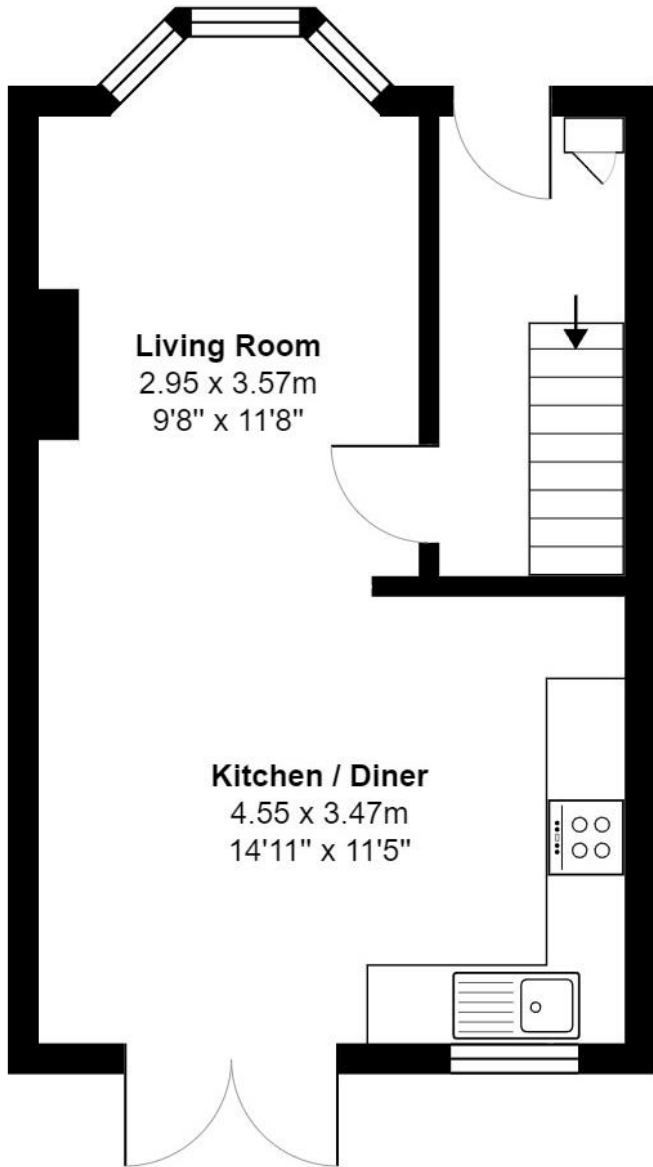
Strictly via Hindwoods.

Donna Distin

d.distin@hindwoods.co.uk



Score	Energy rating	Current	Potential
92+	A		92 A
81-91	B		
69-80	C	71 C	
55-68	D		
39-54	E		
21-38	F		
1-20	G		



Total Area: 66.4 m² ... 715 ft²

All measurements are approximate and for display purposes only