



TO LET

Quentin Road, Lewisham, SE13

£2,700 pcm

4 Bedroom House - Unfurnished





Description

Hindwoods are delighted to offer to the market this four-bedroom mid-terraced family house. This property is close to all local amenities, and within distance of Blackheath Village and Lewisham transport links.

The accommodation comprises:

GROUND FLOOR

Reception 1

10'5" x 11'2" Feature Fireplace. Sash Window. Radiator.

Study

9'0" x 9'3" Feature Fireplace. Sash Window. Radiator.

Kitchen

11'7" x 8'2" Range of wall and base units with inset stainless-steel sink, worktop surface, built in oven, hob and cooker hood. Fridge freezer. Plumbing for washing machine. Door to garden. Sash window.

Garden

Approximately 15'1" x 24'6"

MEZZANINE

Bathroom

Panel enclosed bath, pedestal hand basin and low-level W.C. Separate shower cubicle. Radiator. Part tiled walls. Sash frosted window.

Separate W.C.

Low level W.C. Sash window.

FIRST FLOOR

Bedroom 1

15'3" x 11'7" Feature fireplace. Two sash Windows. Built in cupboard. Radiator.

Bedroom 2

9'6" x 9'7" Feature fireplace. Sash Window. Radiator.

TOP FLOOR

Bedroom 3

15'3" x 11'7" Feature Fireplace. Two sash windows. Radiator.

Bedroom 4

9'2" x 9'7" Feature fireplace. Sash Window. Built in cupboard. Radiator.

Viewing

Strictly via sole agents Hindwoods.

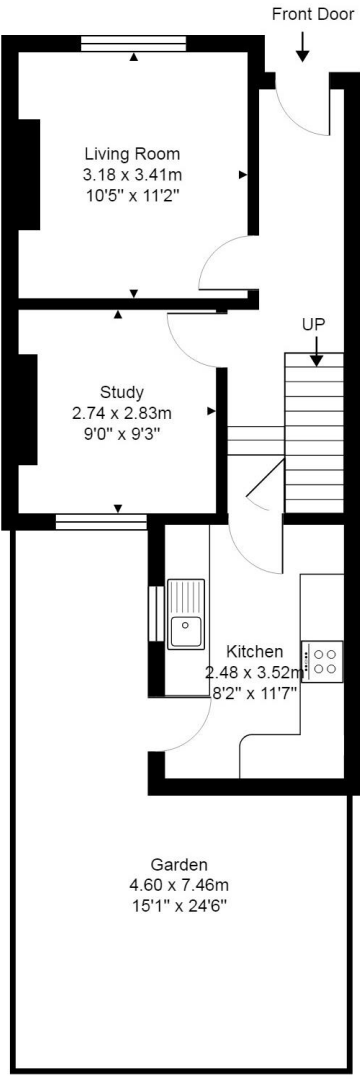
Donna Distin

d.distin@Hindwoods.co.uk

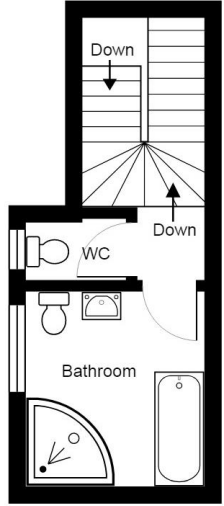


Score	Energy rating	Current	Potential
92+	A		
81-91	B		85 B
69-80	C		
55-68	D	62 D	
39-54	E		
21-38	F		
1-20	G		

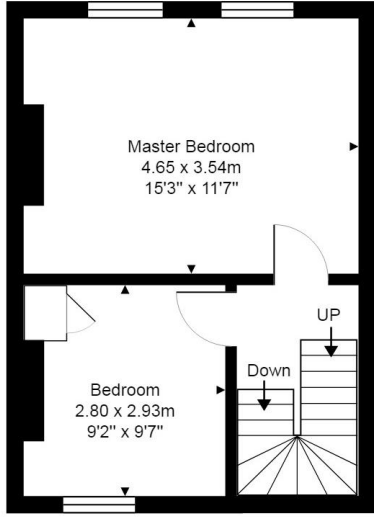
Quentin Road



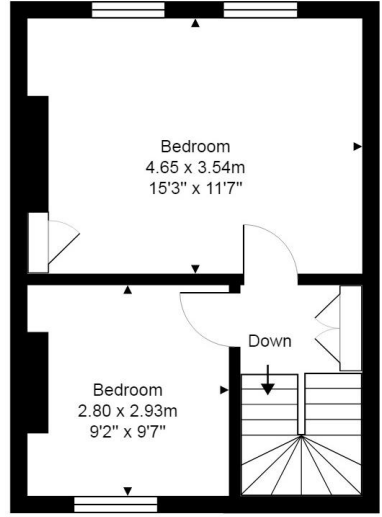
Ground Floor



Mezzanine



1st Floor



2nd Floor