



TO LET

Homecroft Road, Sydenham, SE26

£1,550 pcm
One Bedroom Flat
Unfurnished





Description

Hindwoods are delighted to offer to the market this newly decorated one-bedroom ground floor flat, with access to private garden.

Situated off Newlands Park and within quarter of a mile of Sydenham station and half a mile of Penge East station.

The accommodation comprises;

Lounge

14'3" into bay x 13'3" (4.38m x 4.03m).

Four sash windows. Radiator. Picture rail. Cornice. Inset fireplace. Laminate floor.

Kitchen

12'3" x 11'3" (3.70m x 3.40m).

Range of wall and base units with inset stainless steel sink unit and worktop surfaces. Built in electric oven, gas hob and cooker hood. Tiled splashback. Radiator. Picture rail. Cornice. French door to garden.

Hallway

Understairs cupboard. Radiator. Built in cupboard.

Bathroom

Enclosed bath with thermostatically controlled shower. Pedestal hand basin and W.C. Part tiled walls. Radiator. Built in cupboard enclosing plumbing for washing machine. Extractor fan. Ideal boiler.

Bedroom

15' x 11'6" (4.53m x 3.49m).

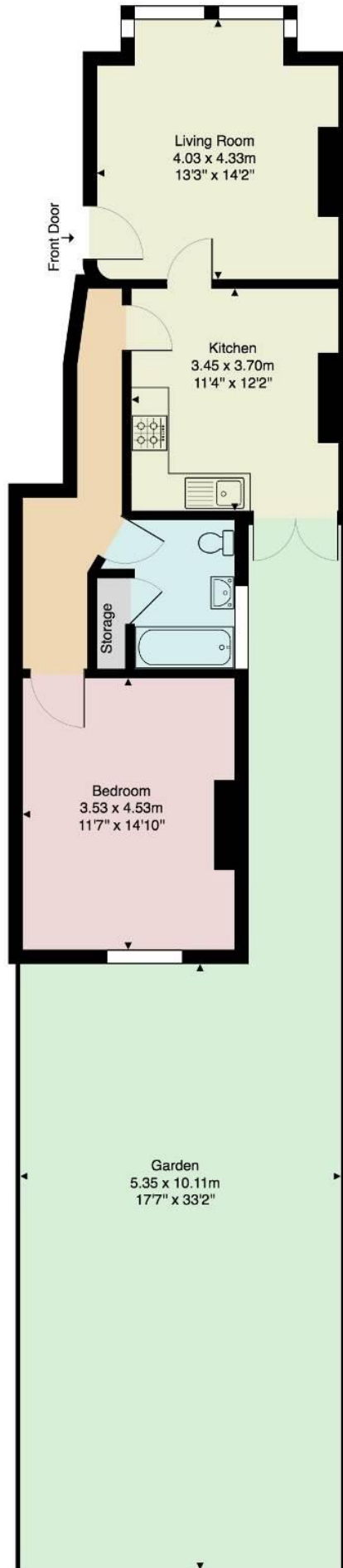
Radiator.

Rear Garden

Score	Energy rating	Current	Potential
92+	A		
81-91	B		
69-80	C		
55-68	D		64 D
39-54	E	51 E	
21-38	F		
1-20	G		



Homecroft Road



Gross Internal Area: 58.9 m² ... 634 ft² (excluding garden)

All measurements are approximate and for display purposes only.