

TO LET

**Burrage Road,
Plumstead, SE18**

1 Bedroom Flat - Unfurnished
£1,250 PCM





Description

Hindwoods are delighted to offer to the market this well presented one bedroom apartment. Located within a one mile walk of Woolwich town centre, offering all local amenities as well as transport routes, such as DLR and National Rail.

The accommodation comprises: -

Kitchen/Open Plan Lounge

16'11" x 13'6" (5.16m x 4.12m)

Range of high gloss grey wall and base units, with Stainless Steel sink, integrated gas hob and electric oven, washing machine and fridge freezer. White tiled splashback. Window to front. Radiator. Newly fitted carpet, sash windows.

Bedroom

16'11 x 13'7" (5.16 x 4.3m)

Newly fitted carpet, double radiator, window to front, curtain railings

Bathroom

Shower, W.C, Pedestal wash hand basin. Part tiled walls, wood effect laminate flooring.

Rear Garden

Brick walls to three sides, fence panels to one. Laid to lawn with pathway.

Information

Viewings

Strictly via Hindwoods.

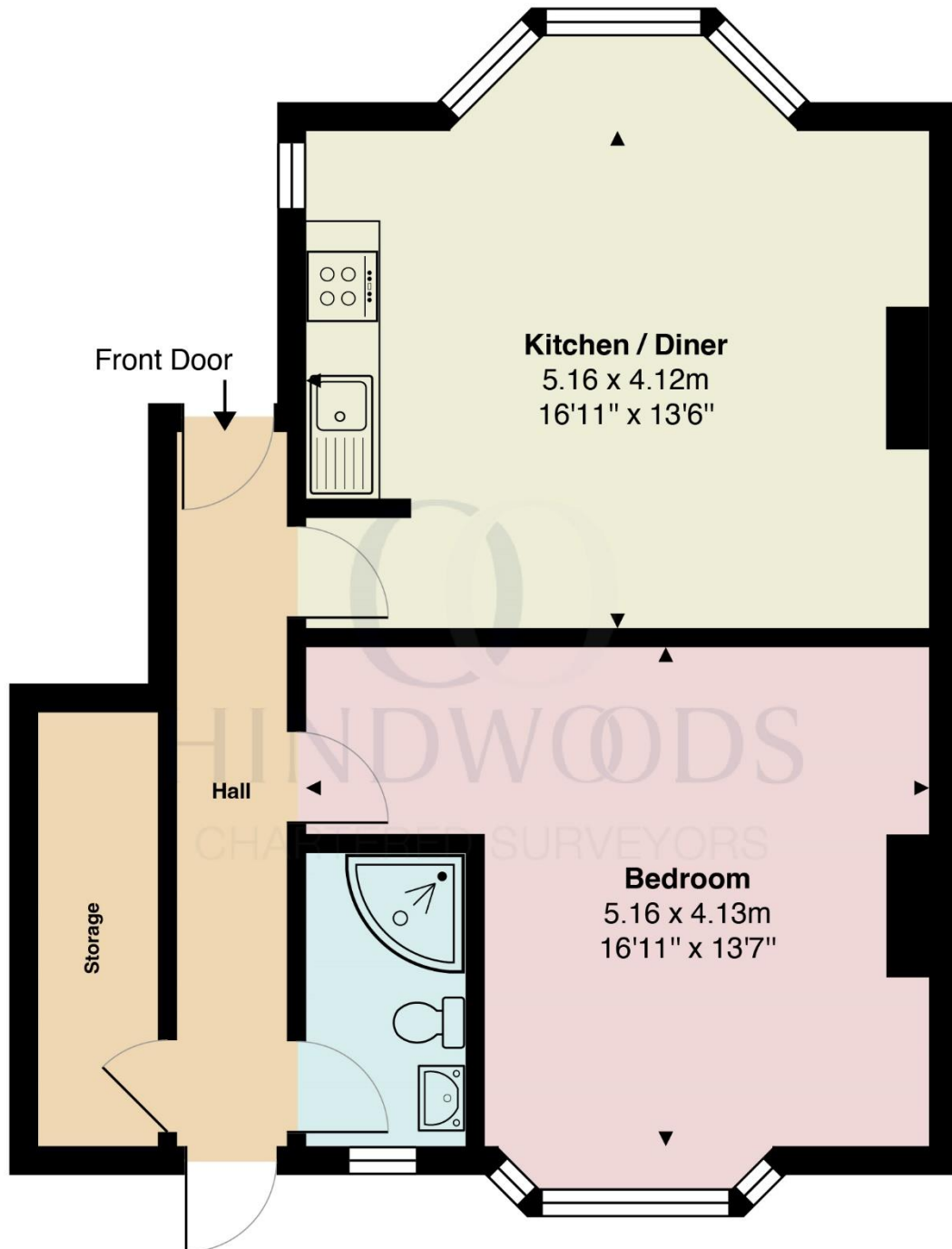
Donna Distin

d.distin@hindwoods.co.uk

Score	Energy rating	Current	Potential
92+	A		
81-91	B		81 B
69-80	C	70 C	
55-68	D		
39-54	E		
21-38	F		
1-20	G		


HINDWOODS
 hindwoods.co.uk
020 8858 9303

Burrage Road



Gross Internal Area: 56.1 m² ... 604 ft²

