



TO LET

Shooters Hill Road
Blackheath, London,

SE3 7HU

£1,800 pcm

One bedroom Flat - Unfurnished





Description

Hindwoods are delighted to offer to the market this one bedroom flat. Situated near to the junction with Kidbrooke Park Road and within a mile of Blackheath, Westcombe Park and Kidbrooke stations.

Living room

18'9" x 14'5" (5.72 x 4.40m) Two double radiators, two full height sash windows, carpeted.

Bedroom

18'9" x 14'7" (5.72 x 4.44m) Two double radiators, two large sash windows, carpeted.



Kitchen

7'8" x 9'5" (2.35 x 2.86m)

Range of wall and base units with inset stainless steel sink unit and worktop surfaces. Built in electric oven, fridge-freezer, gas hob and cooker hood, washing machine, tiled splash-back, sash window.

Bathroom

White suite comprising enclosed bath with thermostatically controlled shower over, pedestal hand basin and W.C. part tiled walls.

Garden

Communal garden.

RENT: £1,800 PER CALENDAR MONTH EXCLUSIVE (i.e. approx. £415.00 week)

EPC

C Rating

Viewing

Strictly via sole agents Hindwoods.

Sharon Richards

[s.ri](mailto:s.richards@hindwoods.co.uk) [k](mailto:s.richards@hindwoods.co.uk)

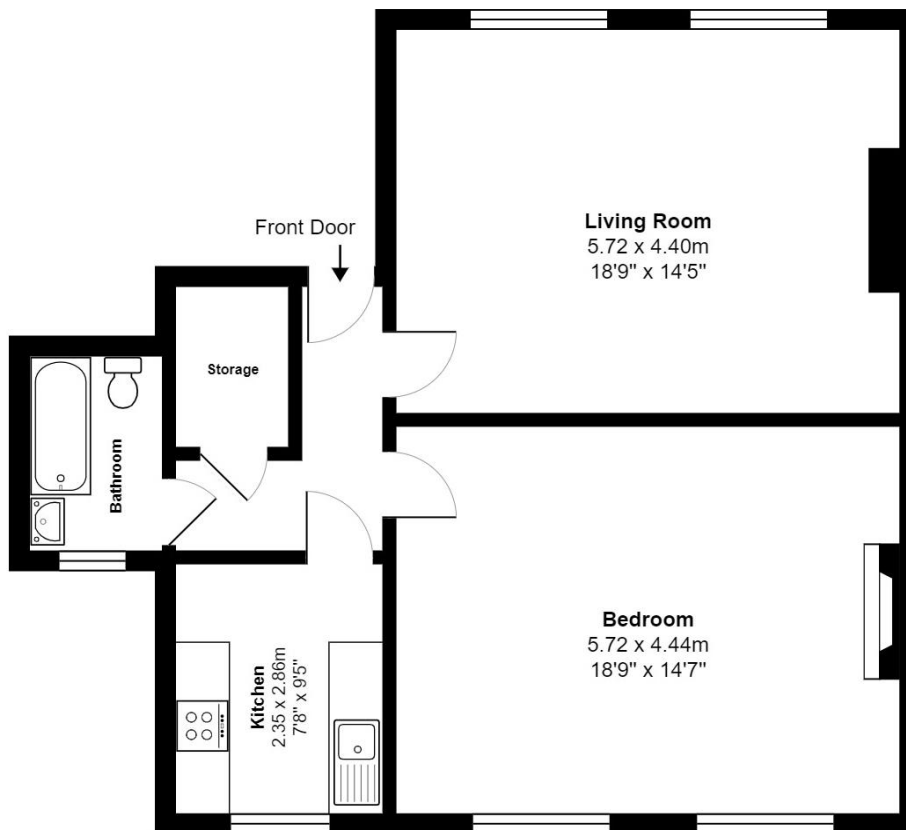

HINDWOODS
hindwoods.co.uk

020 8858 9303



Score	Energy rating	Current	Potential
92+	A		
81-91	B		82 B
69-80	C	72 c	
55-68	D		
39-54	E		
21-38	F		
1-20	G		

83B Shooters Hill Rd



Gross Internal Area: 67.3 m² ... 724 ft² (excluding storage)

Disclaimer: Floor Plan measurements are approximate and are for illustrative purposes only. While we do not doubt the floor plans accuracy, we make no guarantee, warranty or representation as to the accuracy and completeness of the floor plan. You or your advisors should conduct a careful, independent investigation of the property to determine to your satisfaction as to the suitability of the property for your space requirements. Floor Plan sketched by Property Gold Marketing.