



To Let

**Tor Grove  
Thamesmead  
London  
SE28 0LF**

—  
£ 1,600.00

**2 Bedroom Unfurnished Flat to let**





## Location

This well-located property in Thamesmead is conveniently placed near several bus routes, just minutes away. Enjoy easy access to shopping outlets within a short walking distance, and train and tube stations are only about 15 minutes on foot.

Additionally, you'll find a wide variety of restaurants close by, perfect for dining out and exploring local cuisine.

## Description

Hindwoods are delighted to present this modern two bedroom flat on the second floor of an architect designed building. Located in West Thamesmead with all local amenities and transport links close by.

## Kitchen/Living Room

17'2" x 12'10" (5.22m x 3.90m).

Open plan kitchen with spacious living room with vinyl flooring radiator and floor to ceiling windows. The kitchen is equipped with a gas cooker and double oven, oven hood, breakfast bar, and sink. radiator and floor to ceiling windows

## Bedroom 1

10'3" x 8'4" (3.13m x 2.53m).

The bedroom has vinyl flooring with a window and radiator.

## Bedroom 2

13.'4" X 10'0" (4.08m x 3.05m).

The bedroom is full vinyl flooring with window and Radiator.

## Bathroom

5.'7" x 7'8" (1.71m x 2.34m).

The bathroom is fully tiled with a bath, toilet, and wash basin.

## EPC

B Rating

## Viewing

Strictly via sole agents Hindwoods.

0208 858 9303

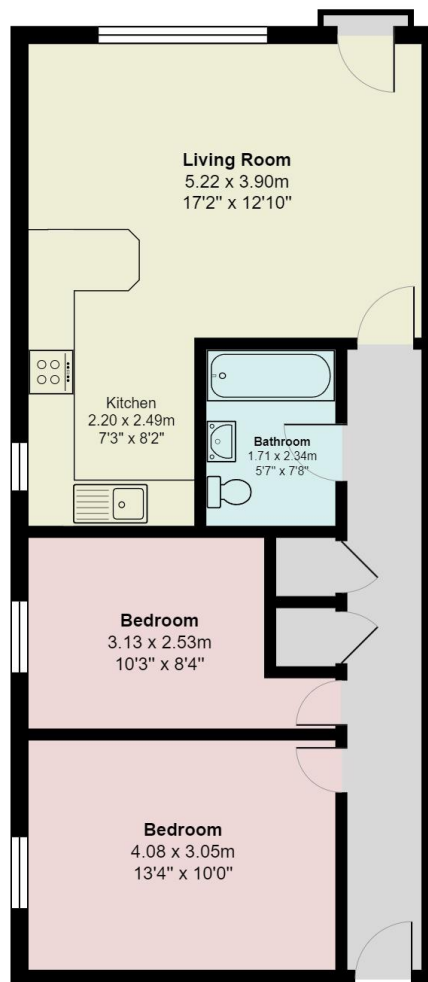
Louis Manzi

[l.manzi@Hindwoods.co.uk](mailto:l.manzi@Hindwoods.co.uk)



Score	Energy rating	Current	Potential
92+	<b>A</b>		
81-91	<b>B</b>	82 B	82 B
69-80	<b>C</b>		
55-68	<b>D</b>		
39-54	<b>E</b>		
21-38	<b>F</b>		
1-20	<b>G</b>		

Tor Grove



Total Area: 62.0 m<sup>2</sup> ... 667 ft<sup>2</sup>

All measurements are approximate and for display purposes only