



TO LET

# Hollingbourne Road, Herne Hill, SE24

£1,350 pcm.  
One bedroom Flat  
Unfurnished







## Description

Hindwoods are delighted to welcome to the market this self contained, top floor split level flat being one of three in a double fronted semi detached period property.

The accommodation comprises;

### Living room

19'4" x 22'2" (5.90 x 6.75m)

Three double glazed timber casement windows. Radiator. Inset fireplace. Inset spotlights.

### Bedroom

8'6" x 12'11" (2.60 x 3.93m)

Two double glazed timber casement windows. One double glazed roof window. Radiator. Inset spotlights.

### Dressing Area

Access to eaves.

### Landing

Double glazed timber casement windows. Built-in cupboard.

### Shower Room

Enclosed shower stall with built in thermostatically controlled shower, wash hand basin and W.C. Radiator. Extractor fan.

### Kitchen

10'7" x 6'5" (3.21 x 1.95m)

Range of wall and base units with inset stainless steel sink unit and worktop surfaces. Built in electric oven, gas hob and cooker hood. Sash window. Tiled splashback. Extractor fan. Worcester boiler.

## Viewing

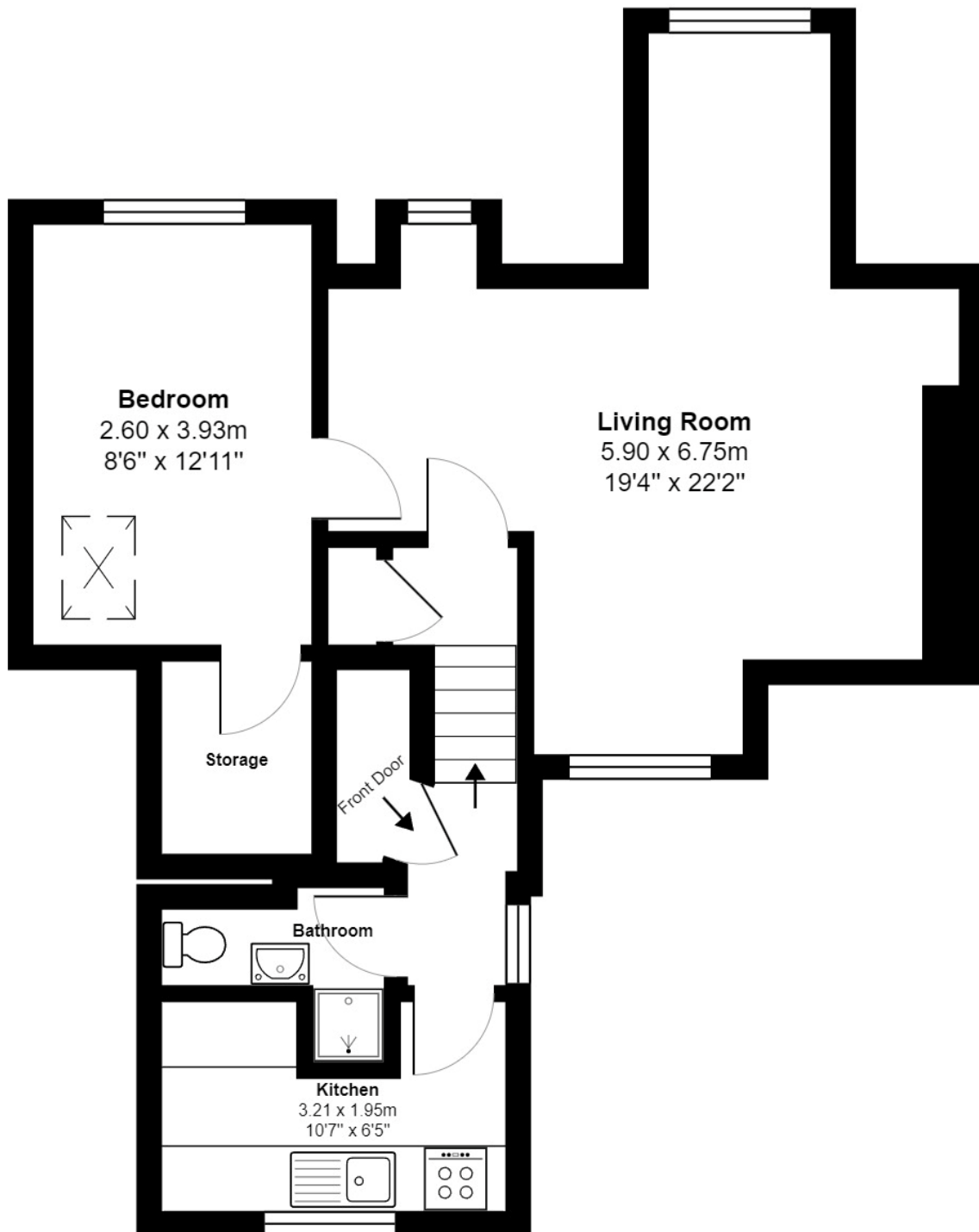
Strictly via sole agents Hindwoods.

Donna Distin

d.distin@Hindwoods.co.uk



Hollingbourne Rd, London



Total Area: 50.4 m<sup>2</sup> ... 542 ft<sup>2</sup>

All measurements are approximate and for display purposes only