

TO LET

**Walworth Road,  
London, SE17 2AL**

3 Bedroom Flat

Unfurnished

£2,800 pcm





## Description

Hindwoods are delighted to welcome to the market this newly refurbished self-contained 3-bedroom split level maisonette. Situated on the corner of Walworth Road and Merrow Street, over commercial premises. Within half a mile of Kennington Underground Station and within a mile of Elephant and Castle with its mainline and underground Stations.

The accommodation consists of the following: -

### 1st Floor

#### Living Room

19'1" x 14'8" (5.81 x 4.48m)

Sash windows, fresh painted walls, newly laid carpet double radiator.

#### Bedroom 1

12'7" x 12'5" (3.82 x 3.78m)

Sash windows, feature fireplace, fresh painted walls, newly laid carpet, double radiator.

#### Kitchen

11'8" x 10'8" (3.57 x 3.25m)

Range of wall and base units with worktop surfaces.

Stainless steel sink with chrome effect mixer tap over.

Built in oven, hob and extractor. Tiled splashback.

Fridge/freezer. Sash window, freshly painted and new flooring.

### 2nd Floor

#### Bedroom 2

19'5" x 14'8" (5.93 x 4.48m)

Windows to front, fresh painted walls, newly laid carpets,

#### Bedroom 3

12'9" x 12'10" (3.89 x 3.90m)

Sash windows, feature fireplace, newly laid carpet and freshly painted walls, double radiator.

#### Bathroom

White suite comprising of panelled bath, pedestal wash hand basin and WC. Separate walk in shower. Part tiled walls, Frosted window, double radiator.

#### WC

Low level W.C, Sash window



## Information

### Viewings

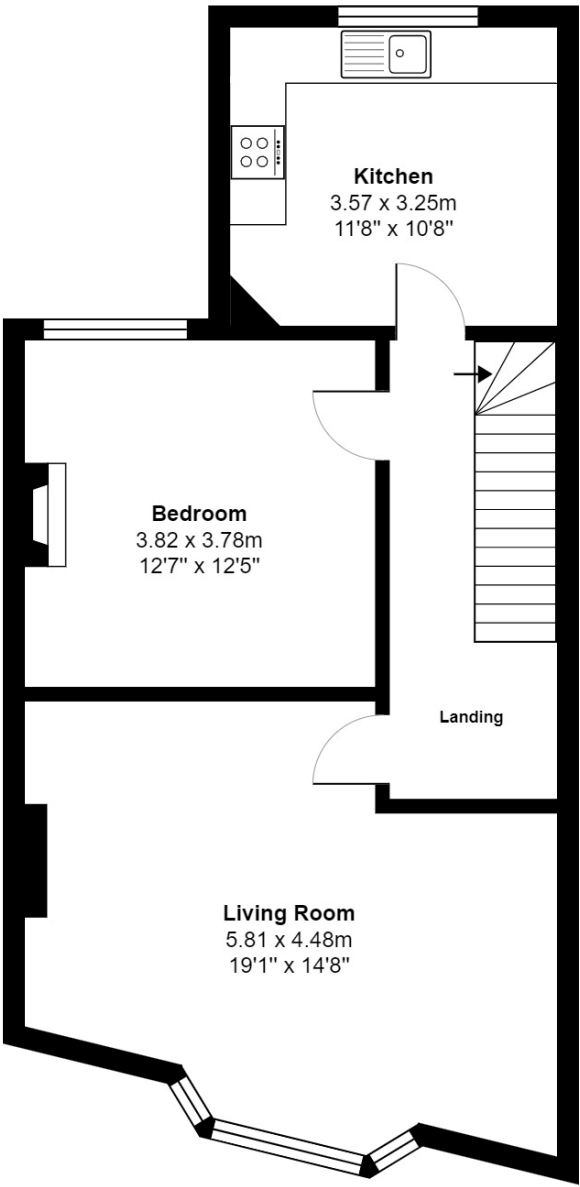
Strictly via Hindwoods.

Donna Distin

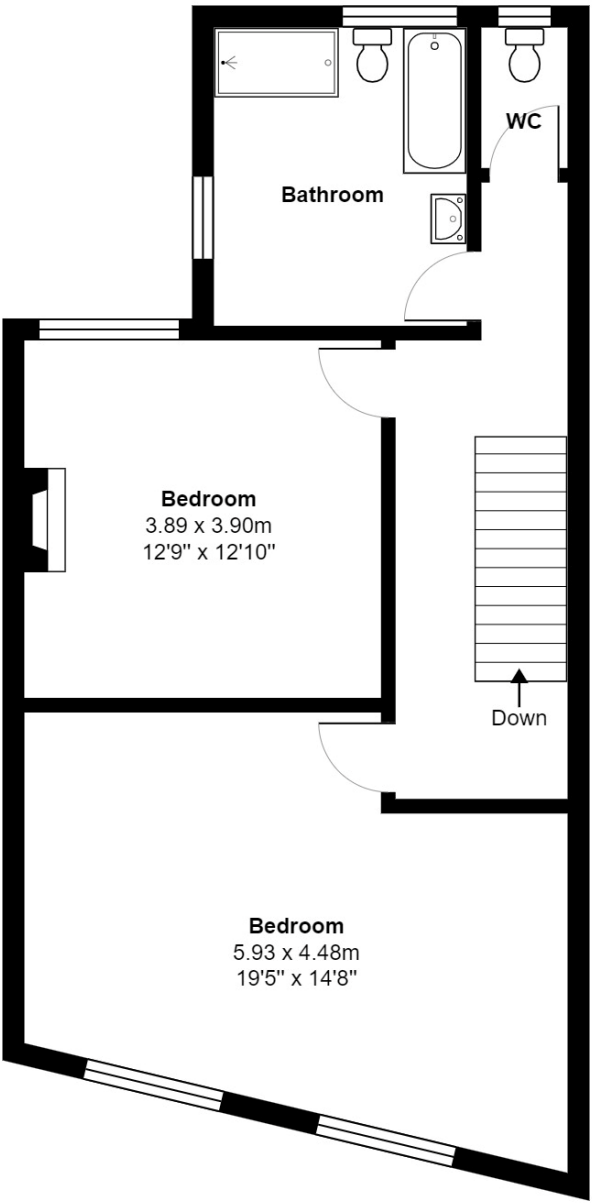
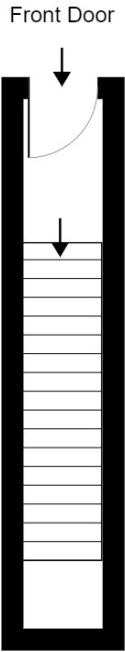
d.distin@hindwoods.co.uk



Walworth Rd



1st Floor



2nd Floor

Total Area: 123.7 m<sup>2</sup> ... 1331 ft<sup>2</sup>

All measurements are approximate and for display purposes only